











Real Thin Brick Products

All our brick tiles are 1/2" thick.

****Each brick tile will have a variation, even if you select only one color for your order, you will get some that are lighter, some darker and some in between. We use 100% kiln firing which creates a beautiful natural brick color variation. We highly recommend viewing these brick tiles installed for the final product look! You can view the installation on our online store by [clicking here.](https://www.order.realthinbrick.com) <https://www.order.realthinbrick.com>

<u>Code</u>	<u>Collection name</u>	<u>color mix</u>	<u>Color mix description</u>	<u>size</u>	<u>Picture of brick tile</u>
A-101	Antique	Ravenna	Natural tile variation	8" x 2-1/4"	
A-102	Antique	Magnolia	Wood Ash pressed into the brick	8" x 2-1/4"	
A-103	Antique	Georgetown	Charred black and Wood Ash variation	8" x 2-1/4"	
A-103H	Antique	Georgetown	Heavy Charred black	8" x 2-1/4"	
A-104	Antique	Snoqualmie	Light white variation	8" x 2-1/4"	
A-105	Antique	Snohomish	heavy white	8" x 2-1/4"	
A-106	Antique	Queen Ann	chipped white	8" x 2-1/4"	
A-107	Antique	Leavenworth	Heavy off-white with brown tones	8" x 2-1/4"	
A-108	Antique	Ellensburg	Light bright-white painted affect	8" x 2-1/4"	
A-201	Antique	Ravenna	Natural	7-1/4" x 3-1/4"	
A-202	Antique	Magnolia	Wood Ash	7-1/4" x 3-1/4"	

A-203	Antique	Georgetown	Charred black and Wood Ash	7-1/4" x 3-1/4"	
A-204	Antique	Snoqualmie	Light white	7-1/4" x 3-1/4"	
A-205	Antique	Snohomish	heavy white	7-1/4" x 3-1/4"	
A-206	Antique	Queen Ann	chipped white	7-1/4" x 3-1/4"	
A-207	Antique	Leavenworth	light off-white with brown tones	7-1/4" x 3-1/4"	
A-208	Antique	Ellensburg	Light off-white painted affect	7-1/4" x 3-1/4"	
A-301	Antique	Ravenna	Natural	8 x 4"	
A-302	Antique	Magnolia	Wood Ash	8 x 4"	
A-303	Antique	Georgetown	Charred black and Wood Ash	8 x 4"	
A-304	Antique	Snoqualmie	Light white	8 x 4"	
A-305	Antique	Snohomish	heavy white - partial coverage	8 x 4"	
A-306	Antique	Queen Ann	chipped white	8 x 4"	
A-307	Antique	Leavenworth	Heavy off white with brown tones	8 x 4"	

A-308	Antique	Ellensburg	Heavy Bright-white painted affect	8 x 4"	
R-101	Rustic	Ravenna	Natural	8" x 2-1/4"	
R-102	Rustic	Magnolia	Wood Ash	8" x 2-1/4"	
R-103	Rustic	Georgetown	Charred black and Wood Ash	8" x 2-1/4"	
R-104	Rustic	Snoqualmie	Light white	8" x 2-1/4"	
R-105	Rustic	Snohomish	heavy white - partial coverage	8" x 2-1/4"	
R-106	Rustic	Queen Ann	chipped white	8" x 2-1/4"	
R-107	Rustic	Leavenworth	Heavy off-white with brown tones	8" x 2-1/4"	
R-108	Rustic	Ellensburg	Heavy Bright-white painted affect	8" x 2-1/4"	
R-201	Rustic	Ravenna	Natural	7-1/2" x 3 3/4"	
R-202	Rustic	Magnolia	Wood Ash	7-1/2" x 3 3/4"	
R-203	Rustic	Georgetown	Charred black and Wood Ash	7-1/2" x 3 3/4"	
R-204	Rustic	Snoqualmie	Light white	7-1/2" x 3 3/4"	
R-205	Rustic	Snohomish	heavy white - partial coverage	7-1/2" x 3 3/4"	
R-206	Rustic	Queen Ann	chipped white	7-1/2" x 3 3/4"	
R-208	Rustic	Ellensburg	Heavy off-white painted affect	7-1/2" x 3 3/4"	

Color Mix Details

01 - Ravenna: - All 100% Natural color of the clay, some tiles might be darker than others depending on the brick tiles location during the kiln firing process. (Example: A-301, A-101, R-101 or R-201 brick tiles only). [Click here for more details online.](#)



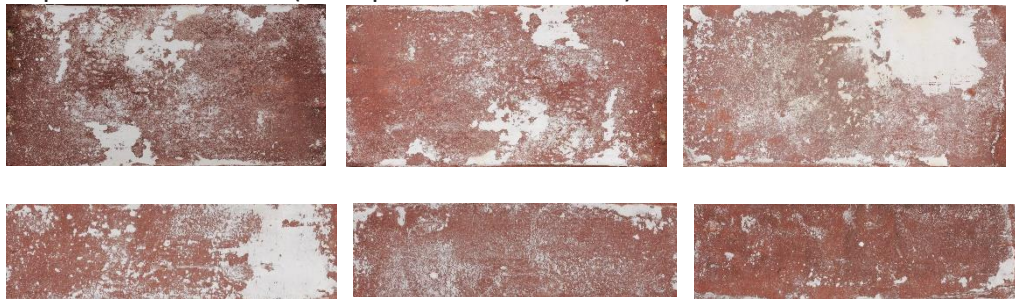
02 - Magnolia: - 100% of the brick tiles have Wood Ash powder pressed into the brick tile surface. Some of the tiles will have light wood ash, and few on the heavier side. (Example: A-302 or A-102 brick tiles only)



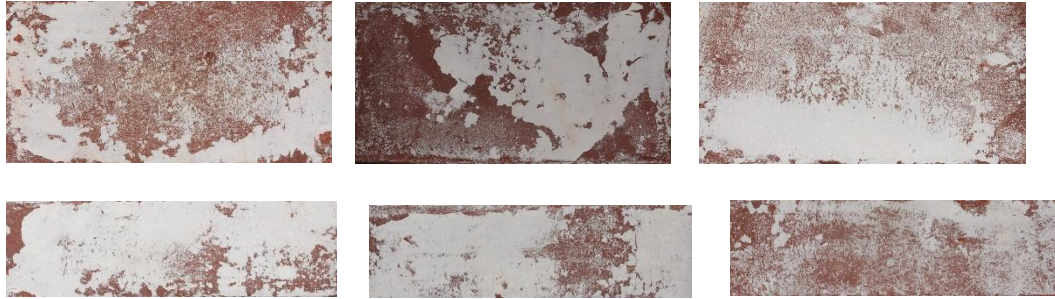
03 - Georgetown: - 100% % Charred-Black + Wood Ash all tiles will have a slightly burnt appearance with red undertones beneath the char. (Example: A-303 or A-103)



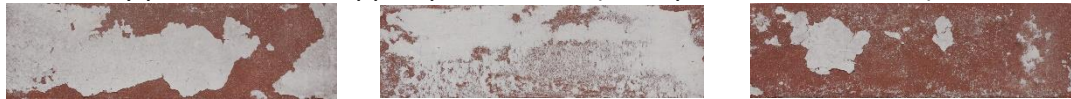
04 - Snoqualmie Whitewash color mix: - 100% of the brick tiles will be lightly covered with white clay powder. A very small amount of the brick tiles will be on the heavier side, unless requested otherwise. (Example: A-304 or A-104)



05 Snohomish Whitewash color mix: - 100% of the brick tiles will be covered with white clay powder(white-heavy) pressed into the brick tile - Some of the red brick surface will still be visible. Some of the brick tiles will be on the lighter side, unless requested otherwise. (Example A-305 or R-205)



06 - Queen Ann Whitewash color mix: - 100% of the brick tiles will be heavily covered with white clay powder with chipped paint effect. (Example: A-306 or R-206)



07 - Leavenworth Whitewash color mix: - 100% of the brick tiles will be covered with white clay powder(off- White-Light painted effect) with darker brown tones. (Example: A-307 or A-107)



08 - Ellensburg Whitewash color mix: - 100% of the brick tiles will be covered with white clay powder(White-Light painted effect). (Example: A-308)



10 - Your own custom Thin Brick color mix: - You choose your own color mix variation. Just tell us what percentage of any of the color mixes above you would like your order to consist of.

Place Order by photo gallery of installs



Antique Collection Custom #317 (Size: 2-1/4" x 8")
SKU PA-10317



Antique Collection Custom #316 (Size: 2-1/4" x 8")
SKU PA-10316



Antique Collection Custom #315 (Size: 4" x 8")
SKU PA-30315



Antique Collection Custom #314 (Size: 4" x 8")
SKU PA-30314



Antique Collection Custom #311 (Size: 4" x 8")
SKU PA-30311



Antique Collection Custom #307 (Size: 2-1/4" x 8")
SKU PA-10307



Antique Collection Custom #299 (Size: 2-1/4" x 8")
SKU PA-10299



Antique Collection Custom #301 (Size: 4" x 8")
SKU PA-30301



Antique Collection Custom #303 (Size: 4" x 8")
SKU PA-30303



Antique Collection Custom #283 (Size: 2-1/4" x 8")
SKU PA-10283



Antique Collection Custom #281 (Size: 4" x 8")
SKU PA-30281



Antique Collection Custom #287 (Size: 2-1/4" x 8")
SKU PA-10287



Antique Collection Custom #280 (Size: 4" x 8")
SKU PA-30280



Antique Collection Custom #277 (Size: 2-1/4" x 8")
SKU PA-10277



Antique Collection Custom #278 (Size: 4" x 8")
SKU PA-30278



Antique Collection Custom #272 (Size: 2-1/4" x 8")
SKU PA-10272



Antique Collection Custom #268 (Size: 4" x 8")
SKU PA-30268



Antique Collection Custom #270 (Size: 2-1/4" x 8")
SKU PA-10270



Antique Collection Custom #261 (Size: 4" x 8")
SKU PA-30261



Antique Collection Custom #269 (Size: 2-1/4" x 8")
SKU PA-10269

For more installs and information on each install, go to <https://order.realthinbrick.com> and select “Place Order by photo gallery of installs”. There are hundreds more final install pictures and details on our online store!

To place an order, call us at [206-399-4087](tel:206-399-4087) or visit www.RealThinBrick.Com